

Zip Code 78751

Residential Statistics



September 2021

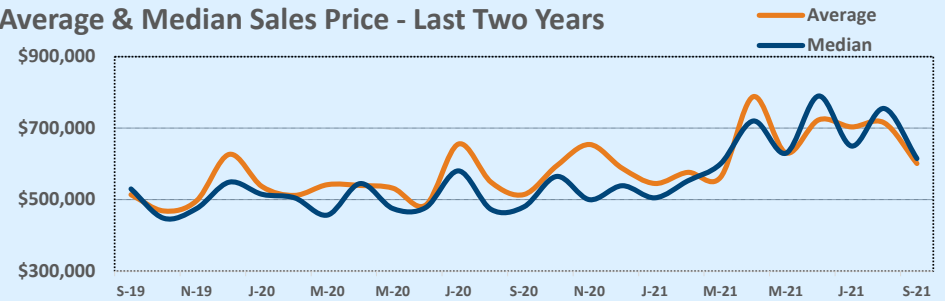
Listings	This Month			Year-to-Date		
	Sep 2021	Sep 2020	Change	2021	2020	Change
Single Family Sales	10	17	-41.2%	129	109	+18.3%
Condo/TH Sales	6	4	+50.0%	37	42	-11.9%
Total Sales	16	21	-23.8%	166	151	+9.9%
New Homes Only	1	1	--	14	16	-12.5%
Resale Only	15	20	-25.0%	152	135	+12.6%
Sales Volume	\$9,618,000	\$10,801,600	-11.0%	\$107,513,218	\$82,267,042	+30.7%
New Listings	--	--	--	--	--	--
Pending	11	19	-42.1%	15	163	-90.8%
Withdrawn	2	7	-71.4%	20	33	-39.4%
Expired	1	2	-50.0%	5	18	-72.2%
Months of Inventory	1.4	1.5	-6.9%	N/A	N/A	--

Price Range	This Month			Year-to-Date		
	New	Sales	DOM	New	Sales	DOM
\$149,999 or under	--	--	--	--	--	--
\$150,000- \$199,999	--	1	48	6	10	57
\$200,000- \$249,999	1	1	2	8	7	23
\$250,000- \$299,999	5	1	14	10	6	47
\$300,000- \$349,999	--	--	--	4	3	4
\$350,000- \$399,999	--	1	22	4	4	48
\$400,000- \$449,999	--	2	55	8	6	80
\$450,000- \$499,999	1	--	--	12	9	28
\$500,000- \$549,999	2	--	--	19	14	14
\$550,000- \$599,999	5	2	13	21	12	13
\$600,000- \$699,999	4	3	7	30	31	11
\$700,000- \$799,999	1	2	9	28	23	9
\$800,000- \$899,999	1	1	3	11	14	13
\$900,000- \$999,999	1	--	--	11	12	13
\$1M - \$1.99M	6	2	14	28	15	13
\$2M - \$2.99M	--	--	--	1	--	--
\$3M+	--	--	--	1	--	--
Totals	27	16	18	202	166	20

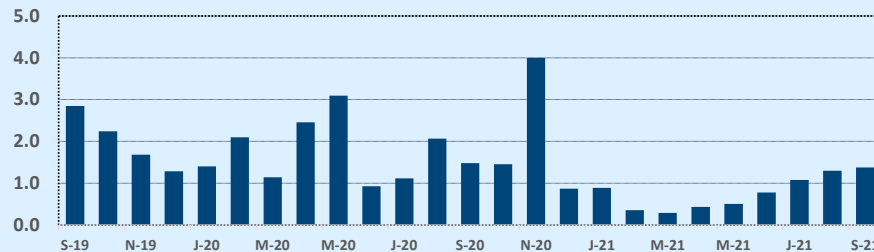
Average	This Month			Year-to-Date		
	Sep 2021	Sep 2020	Change	2021	2020	Change
List Price	\$598,463	\$506,319	+18.2%	\$620,456	\$546,685	+13.5%
List Price/SqFt	\$487	\$399	+22.0%	\$468	\$389	+20.2%
Sold Price	\$601,125	\$514,362	+16.9%	\$647,670	\$544,815	+18.9%
Sold Price/SqFt	\$491	\$406	+20.8%	\$490	\$388	+26.2%
Sold Price / Orig LP	97.8%	100.0%	-2.2%	103.8%	98.1%	+5.7%
Days on Market	18	9	+99.3%	20	34	-40.0%

Median	This Month			Year-to-Date		
	Sep 2021	Sep 2020	Change	2021	2020	Change
List Price	\$612,000	\$475,000	+28.8%	\$599,000	\$495,000	+21.0%
List Price/SqFt	\$468	\$424	+10.3%	\$461	\$383	+20.3%
Sold Price	\$615,000	\$480,000	+28.1%	\$638,500	\$500,000	+27.7%
Sold Price/SqFt	\$472	\$418	+13.0%	\$477	\$375	+27.0%
Sold Price / Orig LP	100.0%	100.0%	+0.0%	101.5%	98.0%	+3.6%
Days on Market	12	5	+130.0%	6	13	-53.8%

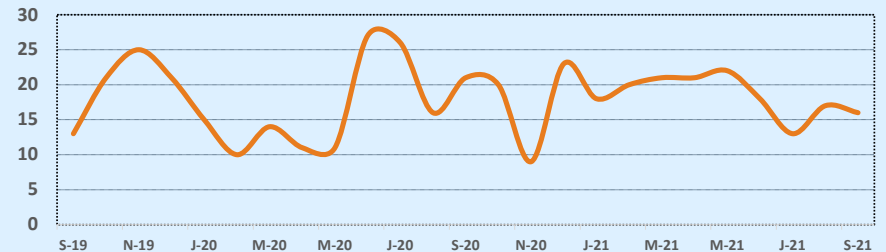
Average & Median Sales Price - Last Two Years



Months of Inventory - Last Two Years



Number of Sales - Last Two Years



Based on information from the Austin Board of REALTORS® (alternatively, from ACTRIS). Neither the Board nor ACTRIS guarantees or is in any way responsible for its accuracy. The Austin Board of REALTORS®, ACTRIS and their affiliates provide the MLS and all content therein "AS IS" and without any warranty, express or implied. Data maintained by the Board or ACTRIS may not reflect all real estate activity in the market.